



RX 60-25

RX 60-30

RX 60-35

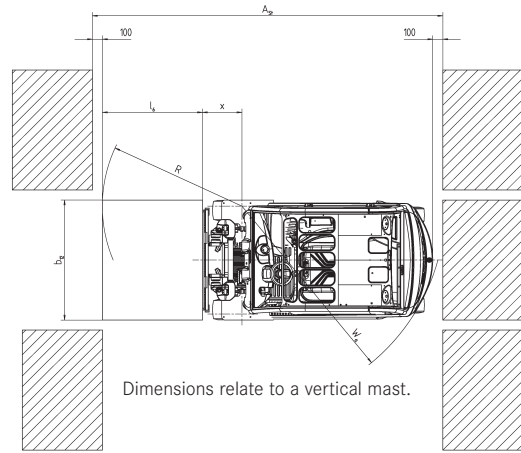
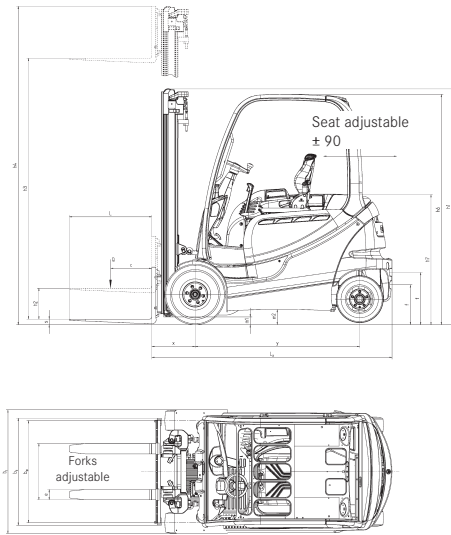
RX 60 Technical data.

Electric forklift trucks.



This specification sheet to VDI Guidelines 2198 only gives the technical figures for the standard truck.
Different tyres, other masts, additional equipment etc. could give different figures.

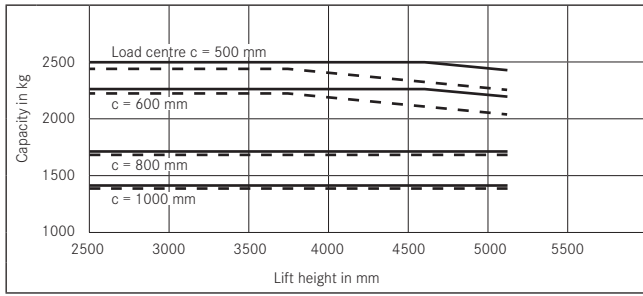
		STILL	STILL	STILL	STILL	STILL		
Characteristics	1.1	Manufacturer						
	1.2	Manufacturer's model designation		RX 60-25	RX 60-25L	RX 60-30		
	1.3	Truck type		Electric	Electric	Electric		
	1.4	Operation		Rider seated	Rider seated	Rider seated		
	1.5	Capacity	Q	t	2.5	2.5	3.0	
	1.6	Load centre	c	mm	500	500	500	
	1.8	Load distance	x	mm	420	420	440	
	1.9	Wheel base	y	mm	1595	1740	1650	
	1.9	Wheel base			1595	1740	1650	
Weights	2.1	Truck weight		kg	4651	4977	5152	
	2.2	Axle load, laden, front		kg	6335	6390	7290	
	2.2.1	Axle load, laden, rear		kg	816	1086	861	
	2.3	Axle load, unladen, front		kg	2393	2568	2581	
	2.3.1	Axle load, unladen, rear		kg	2258	2408	2570	
Wheel chassis	3.1	Tyres			SE	SE	SE	
	3.2	Tyre size, front			23 x 9-10	23 x 9-10	23 x 10-12	
	3.3	Tyre size, rear			18 x 7-8	18 x 7-8	18 x 7-8	
	3.5	Number of wheels front (x=driven)			2x	2x	2x	
	3.5.1	Number of wheels rear (x=driven)			2	2	2	
	3.6	Track width, front	b ₁₀	mm	992	992	950	
	3.7	Track width, rear	b ₁₁	mm	900	900	900	
Basic dimensions	4.1	Tilt Mast/Fork carriage, forward		°	3	3	3	
	4.1.1	Tilt Mast/Fork carriage, back		°	9	9	9	
	4.2	Height, mast lowered	h ₁	mm	2175	2175	2175	
	4.3	Free lift	h ₂	mm	160	160	160	
	4.4	Lift	h ₃	mm	3020	3020	3020	
	4.5	Height, mast raised	h ₄	mm	3650	3650	3800	
	4.7	Height over overhead guard (cab)	h ₆	mm	2210	2209	2212	
	4.8	Seat/Platform height (SRP)	h ₇	mm	1139	1138	1141	
	4.12	Coupling height	h ₁₀	mm	485/365	484/364	487/367	
	4.19	Overall length	l ₁	mm	3328	3473	3403	
	4.20	Length including fork backs l ₂	l ₂	mm	2328	2473	2403	
	4.21	Overall width	b ₁	mm	1199	1199	1198	
	4.22.1	Fork thickness	s	mm	40	40	50	
	4.22.2	Fork width	e	mm	100	100	100	
	4.22.3	Fork length	l	mm	1000	1000	1000	
	4.23	Fork carriage DIN 15173, Class/Form A, B			II/A	II/A	III/A	
	4.24	Fork carriage width	b ₃	mm	1040	1040	1100	
4.31	Floor clearance under mast, laden	m ₁	mm	125	125	125		
4.32	Floor clearance, centre of wheel-base	m ₂	mm	125	124	127		
4.33	Working aisle - 1000 x 1200 pallet crosswise	A _{st}	mm	3654	3805	3735		
4.34	Working aisle - 800 x 1200 pallet lengthways	A _{st}	mm	3852	4005	3935		
4.35	Turning radius	W _a	mm	2032	2185	2095		
4.36	Smallest pivot point distance	b ₁₃	mm	539	590	570		
Performance data	5.1	Travel speed laden		km/h	19	19	19	
	5.1.1	Travel speed unladen		km/h	20	20	20	
	5.2	Hoist speed laden		m/s	0.46	0.45	0.40	
	5.2.1	Hoist speed unladen		m/s	0.55	0.55	0.55	
	5.3	Lowering speed laden		m/s	0.52	0.52	0.52	
	5.3.1	Lowering speed unladen		m/s	0.45	0.45	0.45	
	5.5	Drawbar pull laden		N	8000	7940	7680	
	5.5.1	Drawbar pull unladen		N	8110	8050	8040	
	5.6	Max. drawbar pull laden		N	17440	17390	17050	
	5.6.1	Max. drawbar pull unladen		N	17220	17210	17240	
	5.7	Gradeability laden		%	21.3	20.3	18.1	
	5.7.1	Gradeability unladen		%	29.5	30.2	29.0	
	5.8	Max. gradeability laden		%	25.5	24.2	21.7	
	5.8.1	Max. gradeability unladen		%	29.7	30.2	29.0	
5.9	Acceleration time laden		s	4.5	4.6	4.7		
5.9.1	Acceleration time unladen		s	4.2	4.2	4.2		
5.10	Service brake			electr./mech.	electr./mech.	electr./mech.		
E-Motor	6.1	Drive motor, 60 minute rating		kW	15	15	15	
	6.2	Hoist motor 15% rating		kW	16.3	16.3	16.3	
	6.3	Battery to DIN 43531/35/36 A, B, C, No			DIN 43536 A	DIN 43536 A	DIN 43536 A	
	6.4	Battery voltage		U	V	80	80	80
	6.4.1	Battery capacity		K ₅	Ah	560	700	560
	6.5	Battery weight			kg	1558	1863	1558
	6.6	Energy consumption 60 VDI work cycles/hour			kWh/h	6.70	7.20	7.50
Miscellaneous	8.1	Drive control						
	8.2	Working pressure for attachments		bar	250	250	250	
	8.3	Oil flow for attachments		l/min	30	30	30	
	8.4	Sound level at driver's ear		dB(A)				
	8.5	Towing coupler, Type/Model DIN			Pin	Pin	Pin	



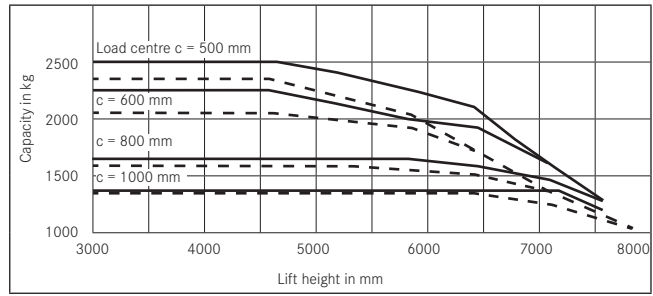
Dimensions relate to a vertical mast.

			Tele mast		HiLo mast		Triplex mast		
RX 60 - 25	Rated lift	h ₃	mm	2320 - 5120	2500 - 4800	3580 - 5080	5230 - 7780		
	Overall height	h ₁	mm	1825 - 3225	1825 - 2975	1825 - 2325	2375 - 3225		
	Free lift Form "A"	h ₂	mm	160	1240 - 2390	1240 - 1740	1790 - 2640		
	Free lift Form "B"	h ₂	mm	160	1195 - 2345	1195 - 1695	1745 - 2595		
	Greatest height Form "A"	h ₄	mm	2950 - 5750	3090 - 5250	4185 - 5685	5835 - 8385		
	Greatest height Form "B"	h ₄	mm	2980 - 5780	3160 - 5280	4255 - 5755	5905 - 8455		
	Forward tilt	a	°	3		3			
	Back tilt	b	°	9 (7 with front screen)		9 (7 with front screen)			
	Load distance	x	mm	420		445			
	Tyres	v/h		23x9-10 // 18x7-8		23x9-10 // 18x7-8			
	Greatest width	B	mm	1199 (from 2825 o.a.h; 1303)		1199	1303		
	Track	v/h	mm	992//900 (from 2775 o.a.h; 1096/900)		992//900	1096//900		
	Fork locations, centre to centre		mm	216/368/445/521/673/(820)/(826)/(970)/(1050)					
	Overall length RX 60-25	L ₂	mm	2328		2353			
	Overall length RX 60-25L	L ₂	mm	2473		2498			
	Working aisle width RX 60-25	A _{st}	mm	(1000x1200) 3654 // (1200x800) 3852		(1000x1200) 3678 // (1200x800) 3877			
Working aisle width RX 60-25L	A _{st}	mm	(1000x1200) 3805 // (1200x800) 4005		(1000x1200) 3830 // (1200x800) 4030				
RX 60 - 30	Rated lift	h ₃	mm	2320 - 5120	2390 - 4690	3430-7630			
	Overall height	h ₁	mm	1825 - 3225	1825 - 2975	1825 - 3225			
	Free lift Form "A"	h ₂	mm	160	1190 - 2340	1190 - 2590			
	Free lift Form "B"	h ₂	mm	160	1045 - 2195	1045-2445			
	Greatest height Form "A"	h ₄	mm	3100 - 5900	3080 - 5380	4110 - 8310			
	Greatest height Form "B"	h ₄	mm	3130 - 5930	3200 - 5500	4275 - 8475			
	Forward tilt	a	°	3		3			
	Back tilt	b	°	9 (7 with front screen)		9 (7 with front screen)			
	Load distance	x	mm	440		465			
	Tyres	v/h		23x10-12 // 18x7-8		23x10-12 // 18x7-8			
	Greatest width	B	mm	1198 (from 2775 o.a.h; 1298)		1298			
	Track	v/h	mm	950//900 (from 2775 o.a.h; 1050/900)		1050//900			
	Fork locations, centre to centre		mm	216/368/445/521/673/796/876/(978)/(1080)/(1181)					
	Overall length RX 60-30	L ₂	mm	2403		2428			
	Overall length RX 60-30L	L ₂	mm	2493		2518			
	Working aisle width RX 60-30	A _{st}	mm	(1000x1200) 3735 // (1200x800) 3935		(1000x1200) 3760 // (1200x800) 3960			
Working aisle width RX 60-30L	A _{st}	mm	(1000x1200) 3825 // (1200x800) 4025		(1000x1200) 3850 // (1200x800) 4050				
RX 60 - 35	Rated lift	h ₃	mm	2120 - 4920	2190 - 4290	3130 - 7330			
	Overall height	h ₁	mm	1825 - 3225	1825 - 2875	1825 - 3225			
	Free lift Form "A"	h ₂	mm	160	1090 - 2140	1090 - 2490			
	Free lift Form "B"	h ₂	mm	160	1045 - 2095	1045 - 2445			
	Greatest height Form "A"	h ₄	mm	3000 - 5800	2955 - 5055	3810 - 8010			
	Greatest height Form "B"	h ₄	mm	3030 - 5830	3000 - 5100	3975 - 8175			
	Forward tilt	a	°	3		3			
	Back tilt	b	°	9 (7 with front screen)		9 (7 with front screen)			
	Load distance	x	mm	440		465			
	Tyres	v/h		315/45-12 // 18x7-8		315/45-12 // 18x7-8			
	Greatest width	B	mm	1400		1400			
	Track	v/h	mm	1002 // 900		1100 // 900			
	Fork locations, centre to centre		mm	216/368/445/521/673/796/876/(978)/(1080)/(1181)					
	Overall length RX 60-35	L ₂	mm	2523		2548			
	Working aisle width RX 60-35	L ₂	mm	(1000x1200) 3854 // (1200x800) 4054		(1000x1200) 3879 // (1200x800) 4079			

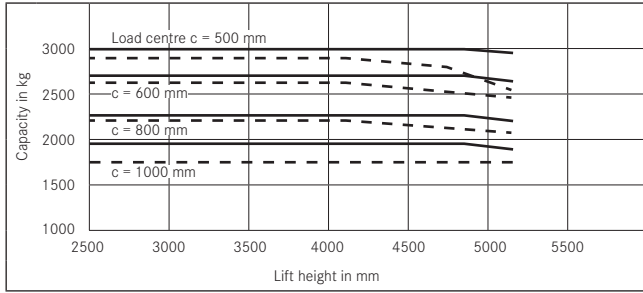
Capacities RX 60-25L Tele/HiLo mast



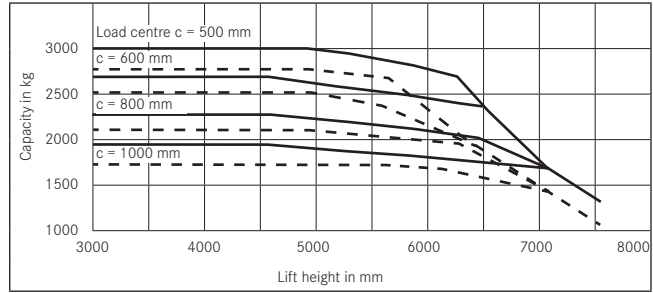
Capacities RX 60-25 with triplex mast



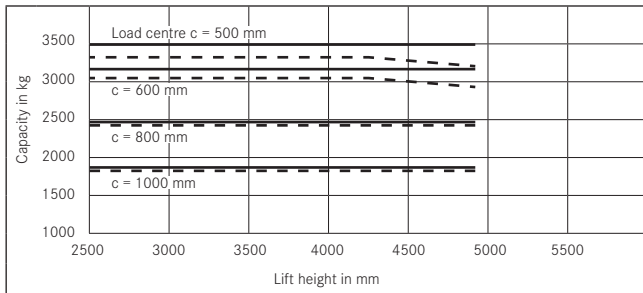
Capacities RX 60-30L Tele/HiLo mast



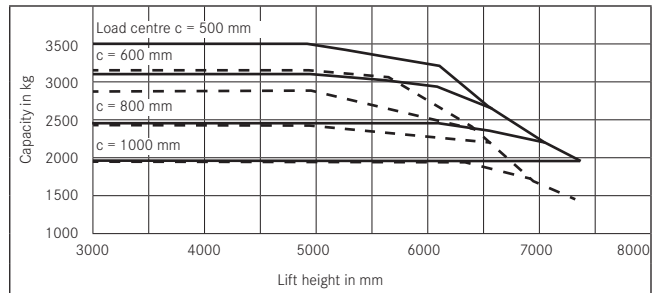
Capacities RX 60-30 with triplex mast



Capacities RX 60-35 Tele/HiLo mast



Capacities RX 60-35 with triplex mast



— without Sideshifter
 - - - with Sideshifter

Gradients maximum distance that can be driven in 60 minutes

Example
 An RX 60-25 with a load of 2500 kg and a gradient of 10% can drive a distance of 600m 10 times per hour

Unladen		RX 60-25	RX 60-25L	RX 60-30	RX 60-30L	RX 60-35
		25%	3770 m	3320 m	3020 m	3020 m
	20%	5340 m	5110 m	5030 m	5030 m	4090 m
	15%	6480 m	6180 m	5990 m	5990 m	5810 m
	10%	8280 m	7900 m	7710 m	7890 m	7260 m
	5%	12400 m	11480 m	11690 m	11680 m	10880 m

Laden		RX 60-25	RX 60-25L	RX 60-30	RX 60-30L	RX 60-35
		20%	2670 m	1790 m	1400 m	1400 m
	15%	4590 m	3740 m	2940 m	2940 m	2090 m
	10%	6000 m	5790 m	5450 m	5450 m	5040 m
	5%	8950 m	8600 m	8200 m	8200 m	7570 m

(dry rough concrete surface = Coefficient of friction 0.80)



Your contact

STILL GmbH

Berzeliusstraße 10

D-22113 Hamburg

Telephone: +49 (0)40/73 39-2000

Telefax: +49 (0)40/73 39-2001

info@still.de

For further information please visit:

www.still.de

STILL Materials Handling Ltd.

Aston Way, Leyland

Lancashire PR26 7UX

Telephone: +44 (0)1772 644300

Telefax: +44 (0)1772 644303

info@still.co.uk

For further information please visit:

www.still.co.uk